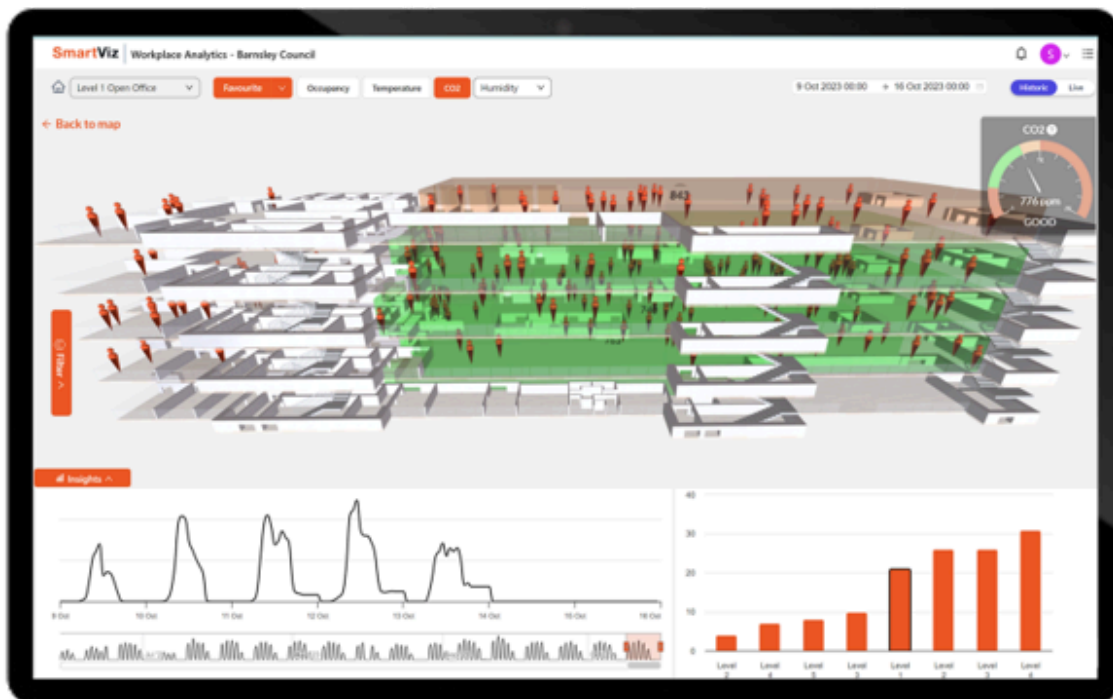


Smarter spaces, happier people:

How Barnsley Council transformed buildings with Smart Tech for comfort & sustainability



"The SmartViz solution has given us real, evidence-based insights into our building usage. It has helped us optimise space, reduce costs, and make informed decisions rather than relying on hunches. We have already adjusted opening hours, identified underutilised spaces, and even repurposed floors for new uses."

David Robinson, Service Director, Core Services Directorate, Customer, Information & Digital Services, Barnsley Council

Be structured

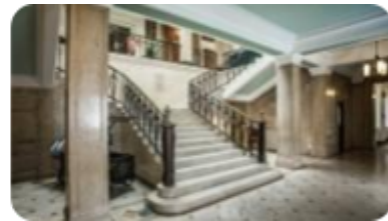
Barnsley Council in South Yorkshire manages municipal buildings, including offices, libraries, and cultural sites, vital for public services. With changing workforce patterns and stricter environmental targets, the Council needed a smarter approach to building management.

Challenge

Manual audits and anecdotal data led to inefficiencies in space usage and decision-making. Many offices were underused, wasting energy and increasing costs. Without real-time insights, managing temperature and air quality was harder, affecting sustainability goals and occupant comfort.

Solution

SmartViz deployed IoT sensors, occupancy analytics, and environmental monitoring to create a digital twin of Council buildings. Real-time data helped optimise space, cut costs, and support carbon reduction targets, providing insights to improve efficiency and sustainability.



Impact

Cost savings

- Projected **10-15% reduction in facilities costs** through optimised space usage.
- Potential for partial floor closures, lowering operational expenses.

Energy reduction

- Estimated **10% decrease in energy consumption** through data-driven controls.
- Reduction in carbon emissions, supporting Barnsley Council's Net Zero goals.

Wellbeing improvement

- Real-time temperature, humidity, and air quality monitoring for **improved occupant comfort**.
- Data-driven adjustments to enhance building environments for users.

Operational efficiency

- Accurate insights enable better space allocation, **reducing underutilised areas**.
- Informed decisions on repurposing spaces for community use or external rentals.



"Working with SmartViz has been a pleasure. They have been responsive, efficient, and reasonably priced. The system was up and running in a matter of days, providing instant access to valuable insights. Their digital twin technology makes it easy to visualise our estate and drive data-led decisions."

David Robinson, Service Director, Core Services Directorate, Customer, Information & Digital Services, Barnsley Council

Ready to transform your building management?

Take the next step towards data-driven decision-making and sustainability. Book a Demo with SmartViz Today to discover how our digital twin and IoT technologies can help you optimise building operations. [Book your demo on smart-viz.com](https://smart-viz.com)